

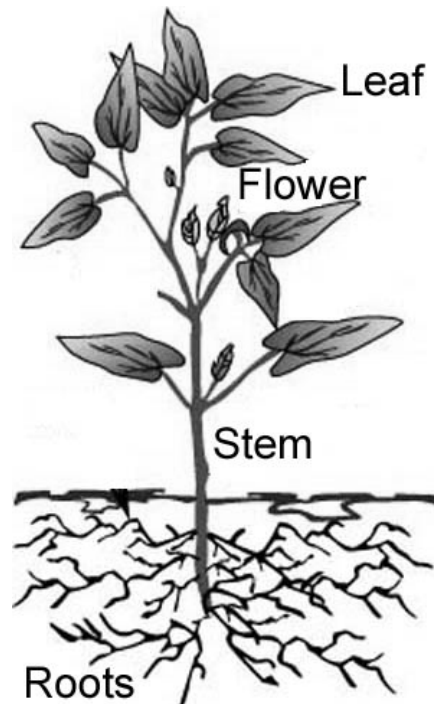
DIRECTIONS: Read the following text and answer the questions.

Plants

Parts of a Plant

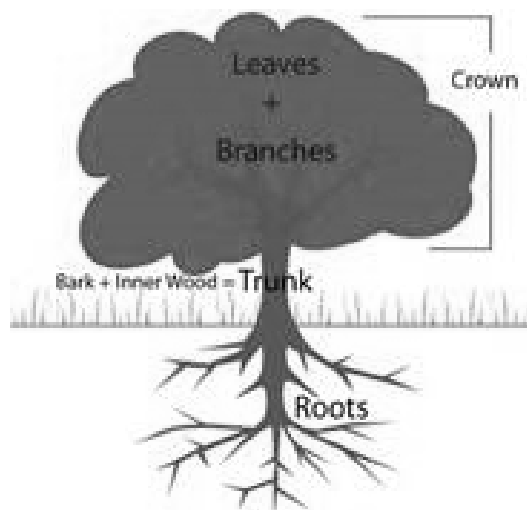
Plants have many parts. Each part of a plant has a special job. The *roots*, *stem*, and *leaves* help the plant grow and be healthy. The *flower* helps the plant make new plants.

- *roots*: suck up water and nutrients from the soil
- *stem*: moves the water and nutrients from the roots to the leaves, and the energy, or food, from the leaves to the root
- *leaves*: turn sunlight and water into plant food
- *flower*: makes new seeds



Trees

Did you know that trees are plants, too? They may be much bigger, but they have the same basic parts that a small plant has. The roots are bigger. The leaves may be big or small. The stem on a tree is its trunk and it has branches to hold the leaves. Trees may grow flowers or fruit that has new seeds for new trees.



1. In this text, the purpose of the diagram is to show the reader
 - a. a photograph of a plant
 - b. the life cycle of a plant
 - c. the parts of a plant
2. In this text, the **bold words** are
 - a. important words about plants.
 - b. headings for paragraphs or sections.
 - c. the title of the text.
3. In this text, words in *italics* are
 - a. important words about plants.
 - b. headings for paragraphs or sections.
 - c. the title of the text.

GLOSSARY

flower: the part of the plant that makes new seeds

fruit: the part of the plant that holds the seeds

seed: the part of the plant that can grow into a new plant

4. Look at the glossary. What does the word **fruit** mean?
 - a. the part of the plant that makes new seeds
 - b. the part of the plant that holds the seeds
 - c. the part of the plant that can grow into a new plant

INDEX

flower.....	6
fruit.....	6
leaves.....	4
stem.....	5
roots.....	3

5. Look at the index. On what page would you find information about leaves?
 - a. Page 4
 - b. Page 5
 - c. Page 6

Name: _____

Nonfiction Text Features Assessment

ANSWER KEY

1. c

2. b

3. a

4. b

5. a